



GAT MONTHLY MEMBERSHIP PROGRESS REPORT

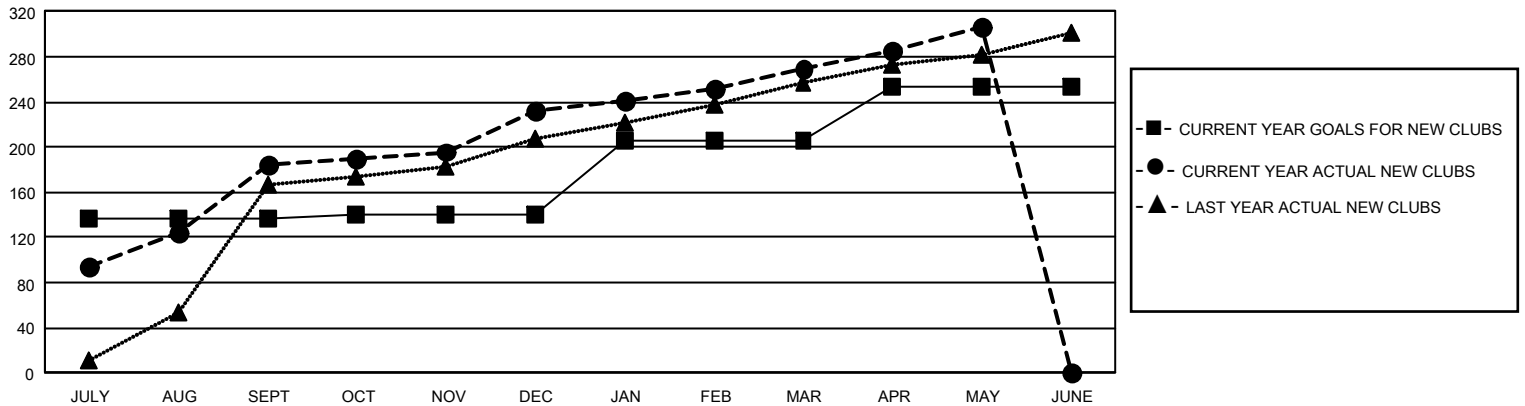
Results as of: 5/31/2025

GMT Constitutional Area 6 - S, Group C

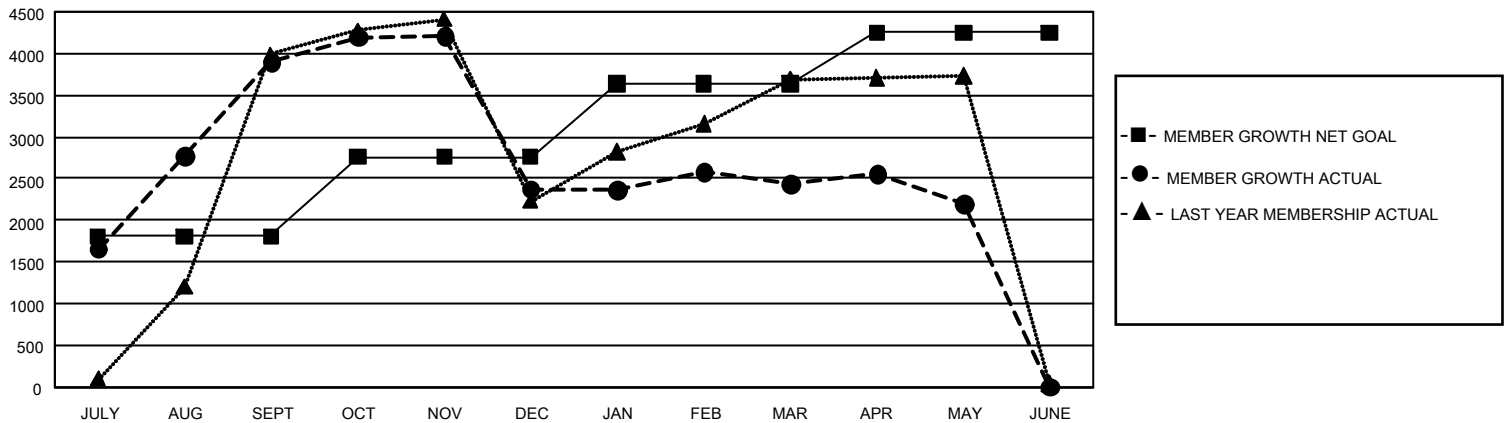
REPORT DOES NOT INCLUDE CLUBS IN UNDISTRICTED AREAS.

Clubs				Members			
RESULTS FOR 2024-2025				RESULTS FOR 2024-2025			
QUARTER	NEW CLUB GOAL	NEW CLUBS	DROPPED CLUBS	QUARTER	MEMBER GROWTH NET GOAL	MEMBER GROWTH ACTUAL	DROPPED MEMBERS ACTUAL (including transfers)
JULY/AUG/SEPT	408	184	33	JULY/AUG/SEPT	1804	6,140	1,873
OCT/NOV/DEC	15	49	81	OCT/NOV/DEC	957	2,684	3,904
JAN/FEB/MAR	195	37	46	JAN/FEB/MAR	879	1,825	1,304
APR/MAY/JUNE	141	36	4	APR/MAY/JUNE	615	1,206	1,234

GOALS AND ACTUAL NEW CLUBS CUMULATIVE



GOALS AND ACTUAL MEMBERS CUMULATIVE



DROPPED CLUBS: 162

1,294 CLUBS OF 2,226 ADDED
1 OR MORE NEW MEMBERS

GENDER DISTRIBUTION

MALE	30,569 (68.40%)
FEMALE	14,089 (31.53%)
NON BINARY	1 (0.00%)
PREFER NOT TO ANSWER	31 (0.07%)

DROPPED MEMBERS

DECEASED	21
CLUB CANCELLED	2,485
OTHER	5,755
TOTAL	8,261

[CLICK HERE FOR
CUMULATIVE MEMBERSHIP
DATA](#)

TOTAL FAMILY UNIT MEMBERS 30,614

FAMILY MEMBERS PAYING HALF DUES 21,365